



ROLES AND RESPONSIBILITIES OF PERHILITAN IN WILDLIFE CONSERVATION

**JABATAN PERLINDUNGAN HIDUPAN LIAR
DAN TAMAN NEGARA
(PERHILITAN)**

ABDUL KADIR BIN ABU HASHIM

28th JULY 2015



1.0 HISTORY



2.0 BACKGROUND

1932

- Wildlife Commission of Malaya established

1939

- Headquarters of the Game Department was established with the appointment of Cpt. A. Ritchie as the first Chief Game Warden. Taman Negara established

1955

- *The Wild Animals and Wild Birds Protection Ordinance No. 2 of 1955* established

1972

- The Protection of Wildlife Act 1972 [Act 76] came into force. Administration of the Game Department of Peninsular Malaysia was taken over by the Federal Government under the Headquarters of the Department of Wildlife and National Parks (PERHILITAN)

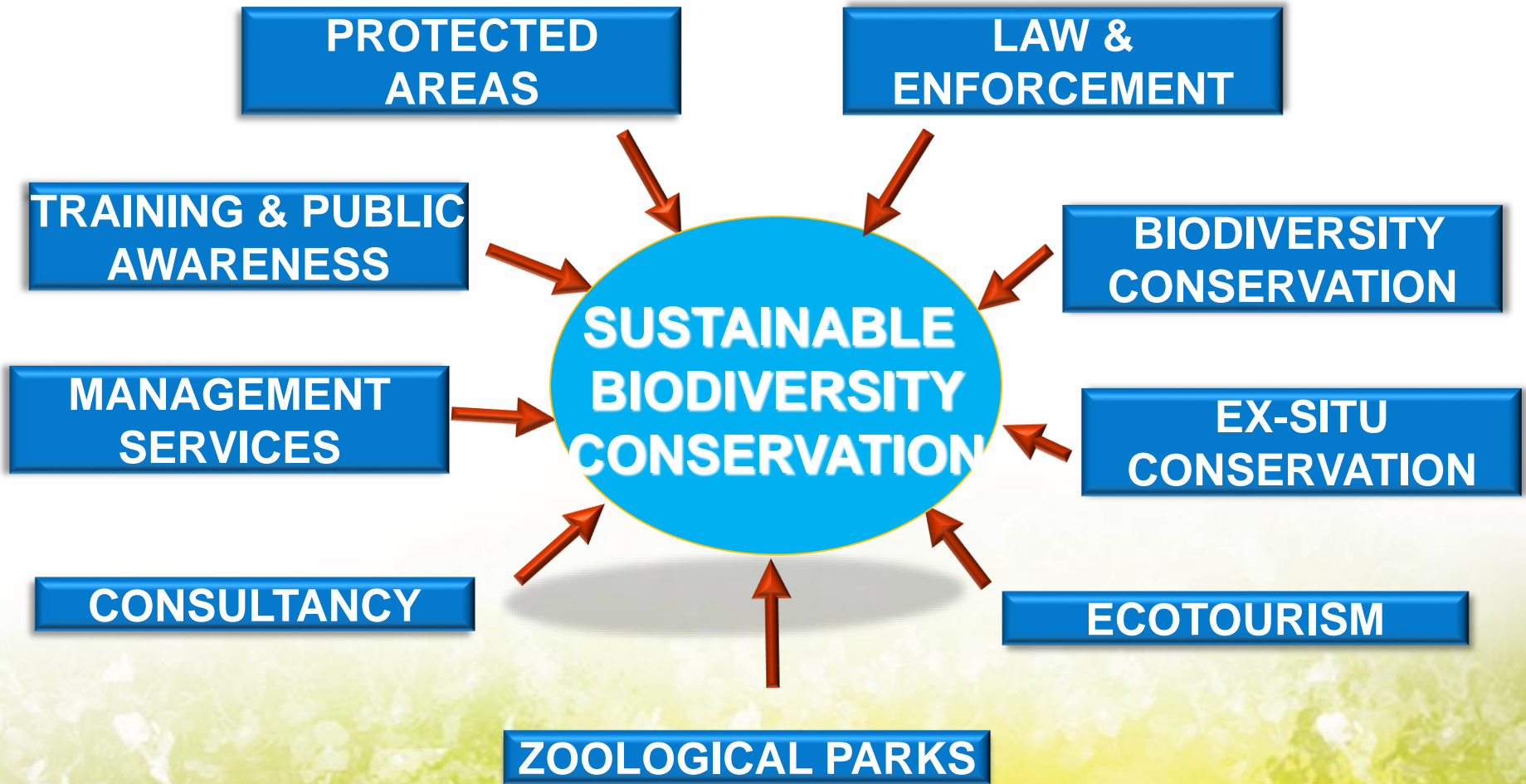
2010

- The Wildlife Conservation Act 2010 [Act 716] entered into force

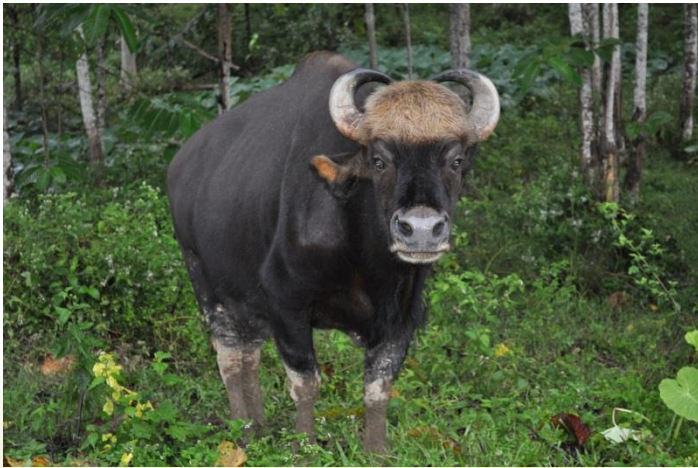


3.0 FUNCTIONAL STRUCTURE





4.0 ORGANISATION CHART



DIRECTOR GENERAL

PUBLIC RELATIONS OFFICER

LAW UNIT

**DEPUTY
DIRECTOR GENERAL I**

**DEPUTY
DIRECTOR GENERAL II**

**DIRECTOR OF
PROTECTED
AREAS**

**DIRECTOR OF
ENFORCEMENT**

**DIRECTOR OF
ECOTOURISM**

**DIRECTOR OF
BIODIVERSITY
CONSERVATION**

**DIRECTOR OF
EX-SITU
CONSERVATION**

**DIRECTOR OF
ZOOLOGICAL
PARKS**

**STATE DWNP
OFFICE**

**DIRECTOR OF
MANAGEMENT
DIVISION**

**DIRECTOR OF
INSTITUTE OF
BIODIVERSITY**

**DIRECTOR OF
CONSULTANCY
DIVISION**

**HEAD OF
INTEGRITY
UNIT**

**DIRECTOR
OF
PERAK**

**DIRECTOR
OF
JOHOR**

**DIRECTOR
OF
PAHANG**

**DIRECTOR
OF
KEDAH**

**DIRECTOR
OF
PENANG**

**DIRECTOR
OF
SELANGOR**

**DIRECTOR
OF
TERENGGANU**

**DIRECTOR
OF
KELANTAN**

**DIRECTOR
OF
PERLIS**

**DIRECTOR
OF NEGERI
SEMBILAN**

**DIRECTOR OF
FEDERAL
TERRITORIES**

**DIRECTOR
OF
MELAKA**

**SUPERINTENDENT
TAMAN NEGARA
PAHANG**

**DIRECTOR OF
TASEK BERA
RAMSAR SITE**

**DIRECTOR OF
KRAU WILDLIFE
RESERVE**

**SUPERINTENDENT
OF PENANG
NATIONAL PARK**

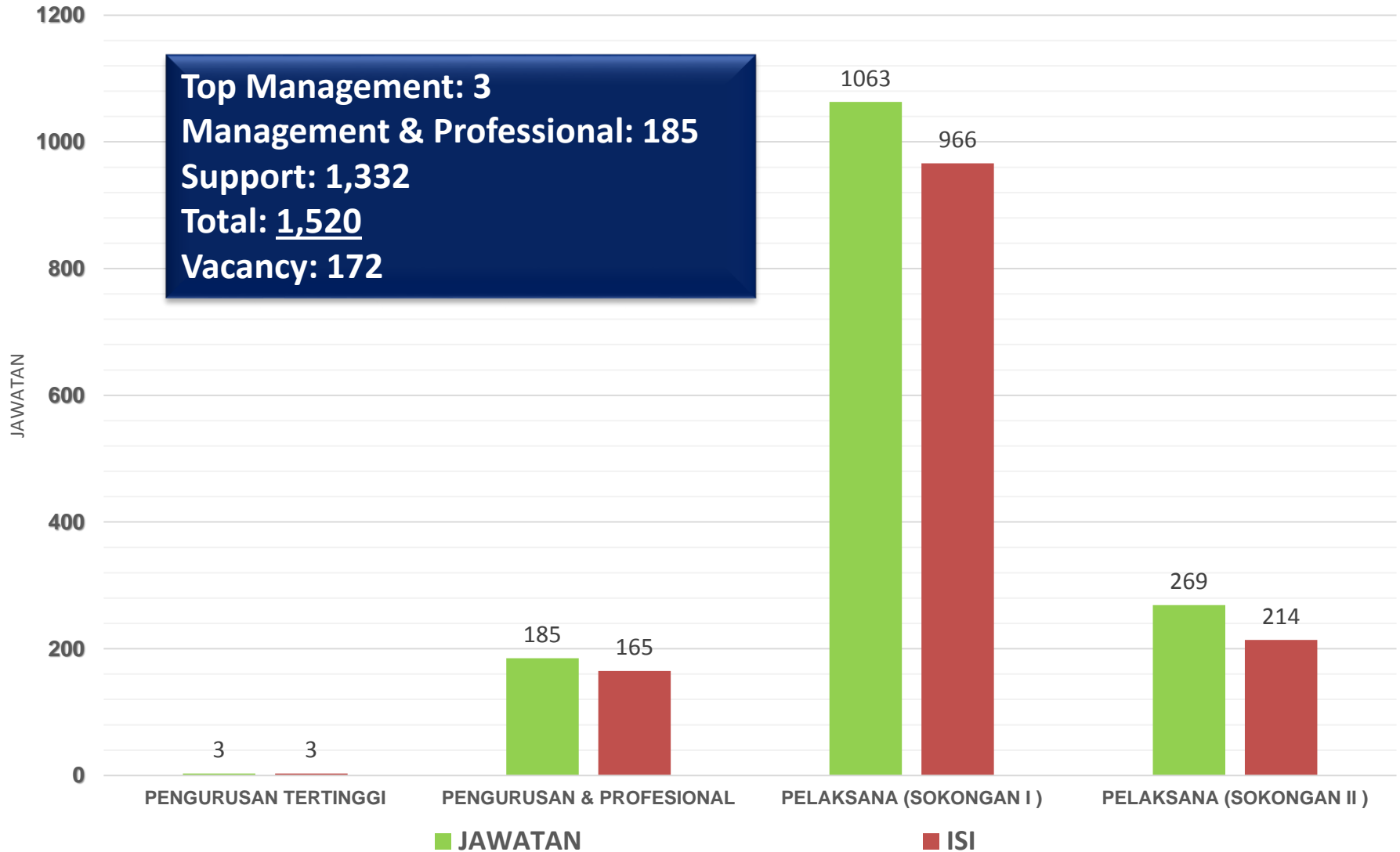
**SUPERINTENDENT
PAYA INDAH
WETLANDS**



5.0 STAFFING



STAFFING BY CATEGORY JANUARY 2015



6.0 PROTECTED AREAS



MAJOR PROTECTED AREAS MANAGED BY DWNP

Penang National Park (2,563 ha)

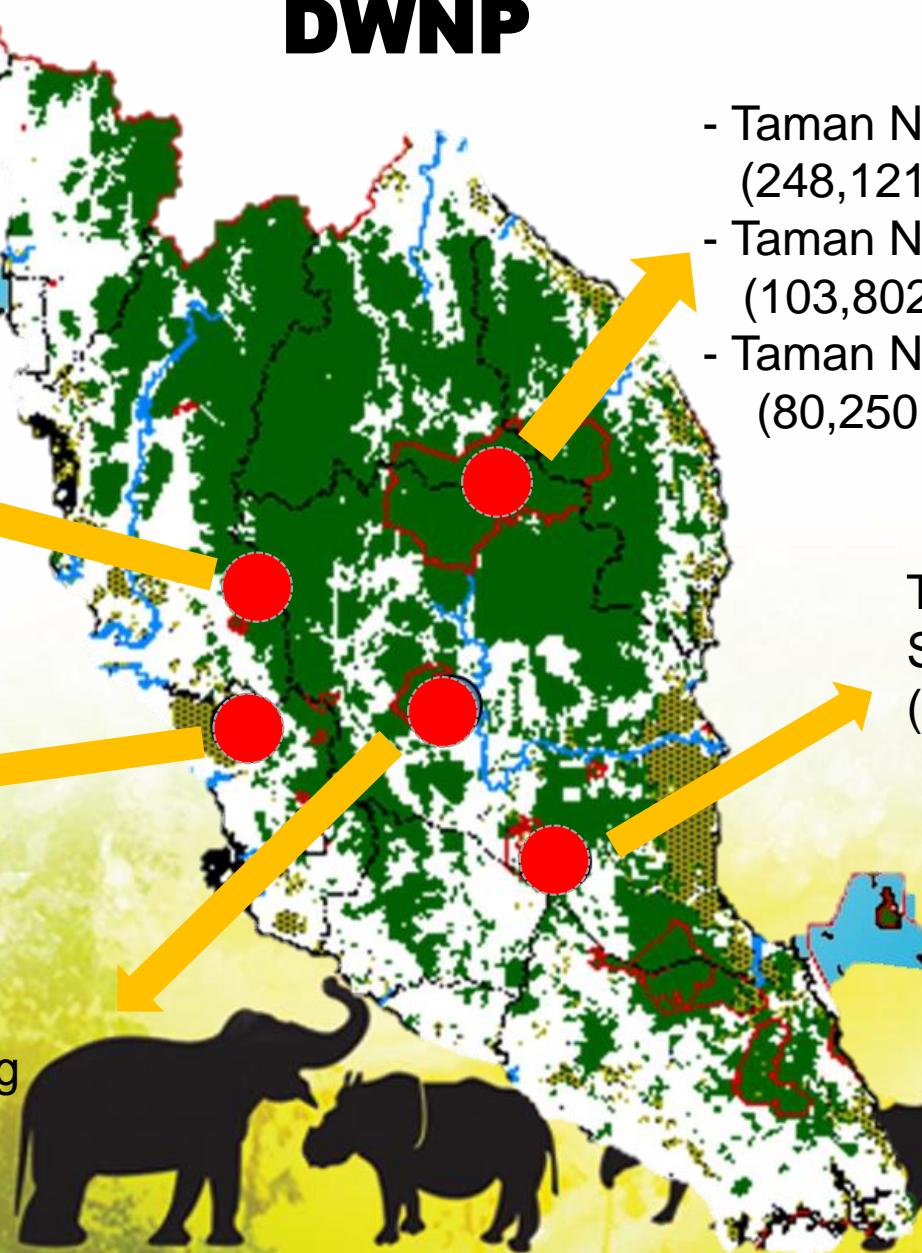
Sungai Wildlife Reserve, Perak (2,468 ha)

Sungai Dusun Wildlife Reserve, Selangor (4,330 ha)

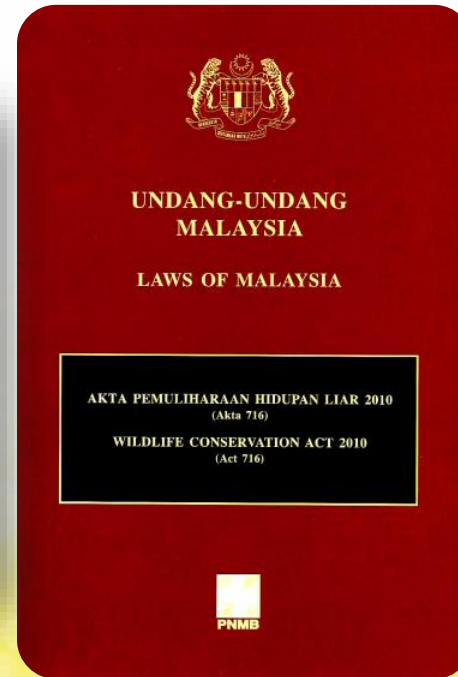
Krau Wildlife Reserve, Pahang (62,395 ha)

- Taman Negara Pahang (248,121 ha)
- Taman Negara Kelantan, (103,802 ha)
- Taman Negara Terengganu, (80,250 ha)

Tasek Bera Ramsar Site, Pahang (31,255 ha)



7.0 ENFORCEMENT



LIST OF LAWS ENFORCED BY DWNP

Act 716

- Wildlife Conservation Act 2010
[Act 716]

Act 686

- International Trade In Endangered Species Act 2008
[Act 686]

Act 226

- Taman Negara Act 1980
[Act 226]

Enactment
14

- Taman Negara Kelantan Enactment of 1938
[Enactment 14]

Enactment
2

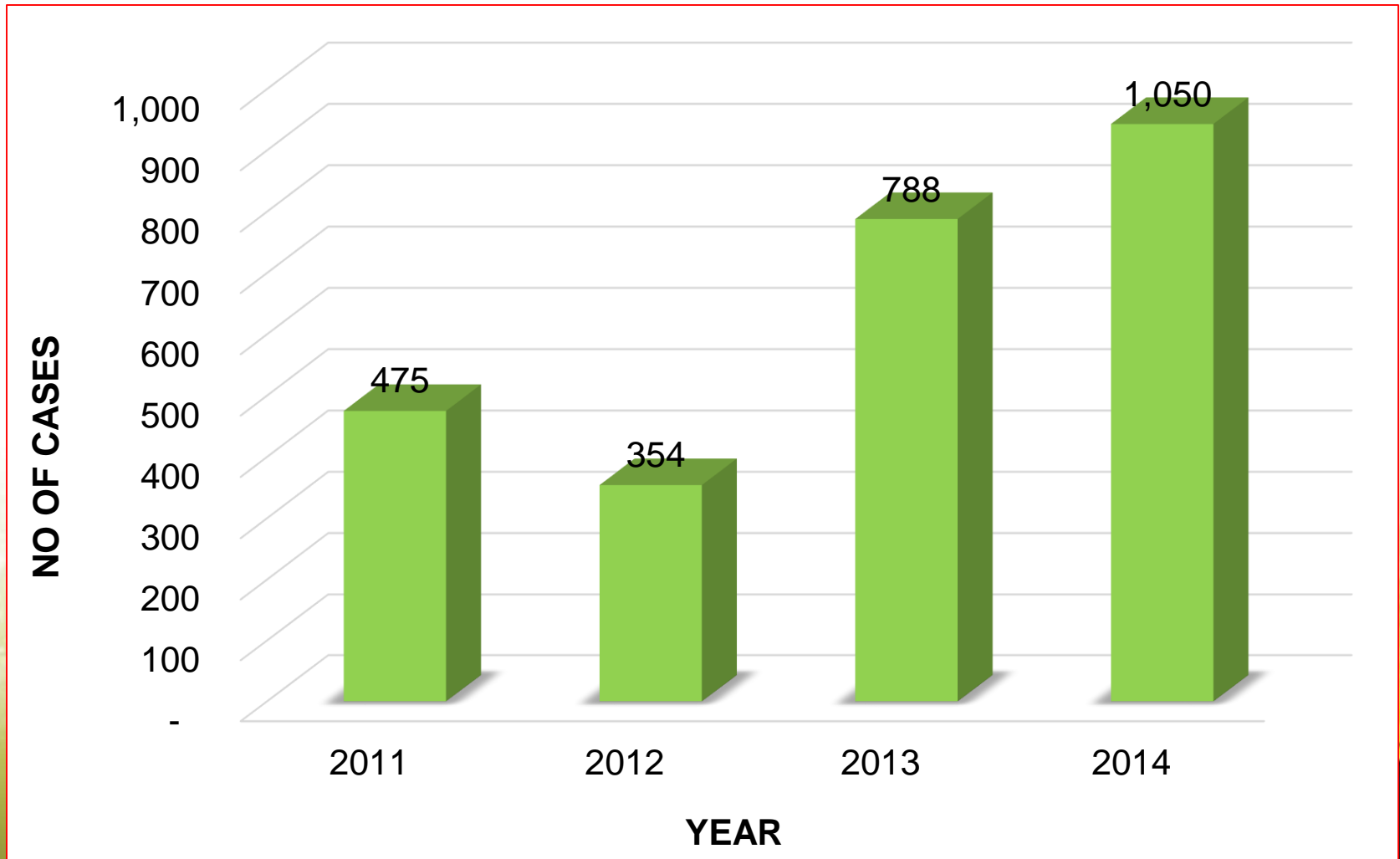
- Taman Negara Pahang Enactment of 1939
[Enactment 2]

Enactment
6

- Taman Negara Terengganu Enactment of 1939
[Enactment 6]



WILDLIFE CRIME CASES RECORDED 2011 - 2014



MONITORING AND AUDIT ZOO & PERMANENT EXHIBITION



COOPERTAION WITH OTHER ENFORCEMENT AGENCIES



8.0 BIODIVERSITY CONSERVATION



WILDLIFE INVENTORY PROGRAM



Sample collection and morphological data recording



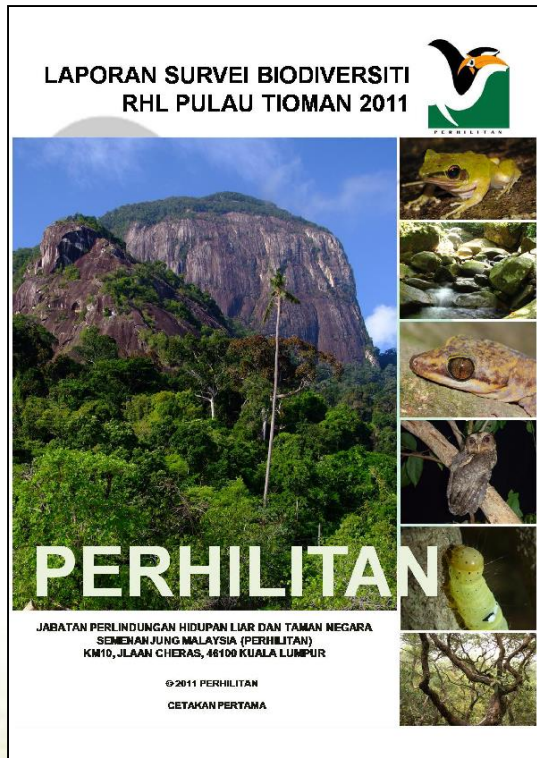
Setting up mist nets



Setting up camera traps



REPORTS AND PUBLICATIONS



Inventory Report



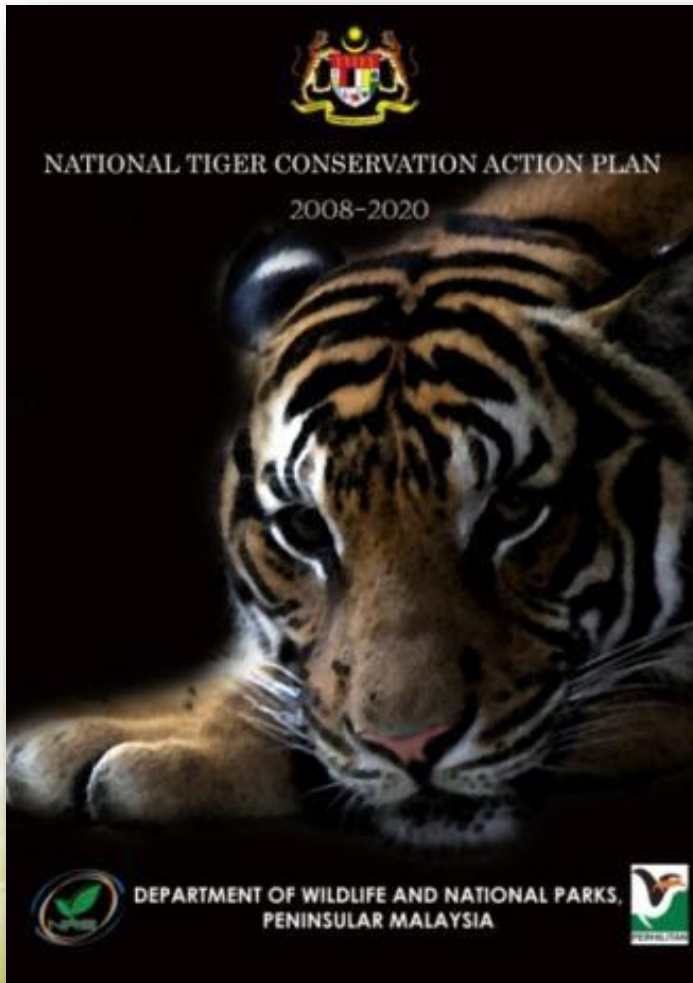
Journal



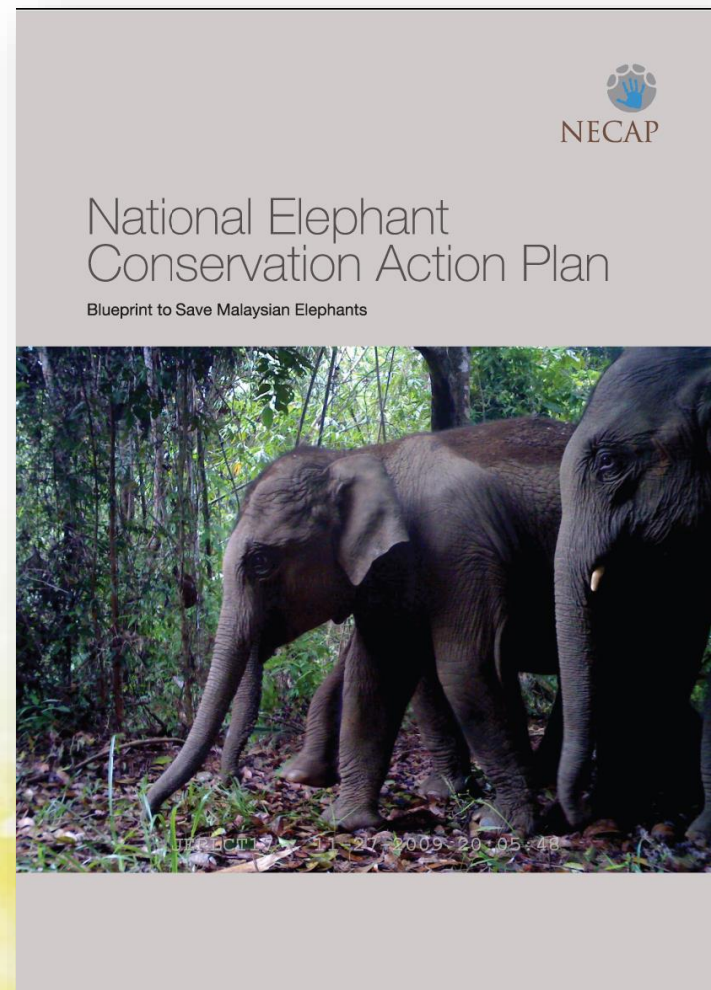
Posters



SPECIES CONSERVATION PLANS



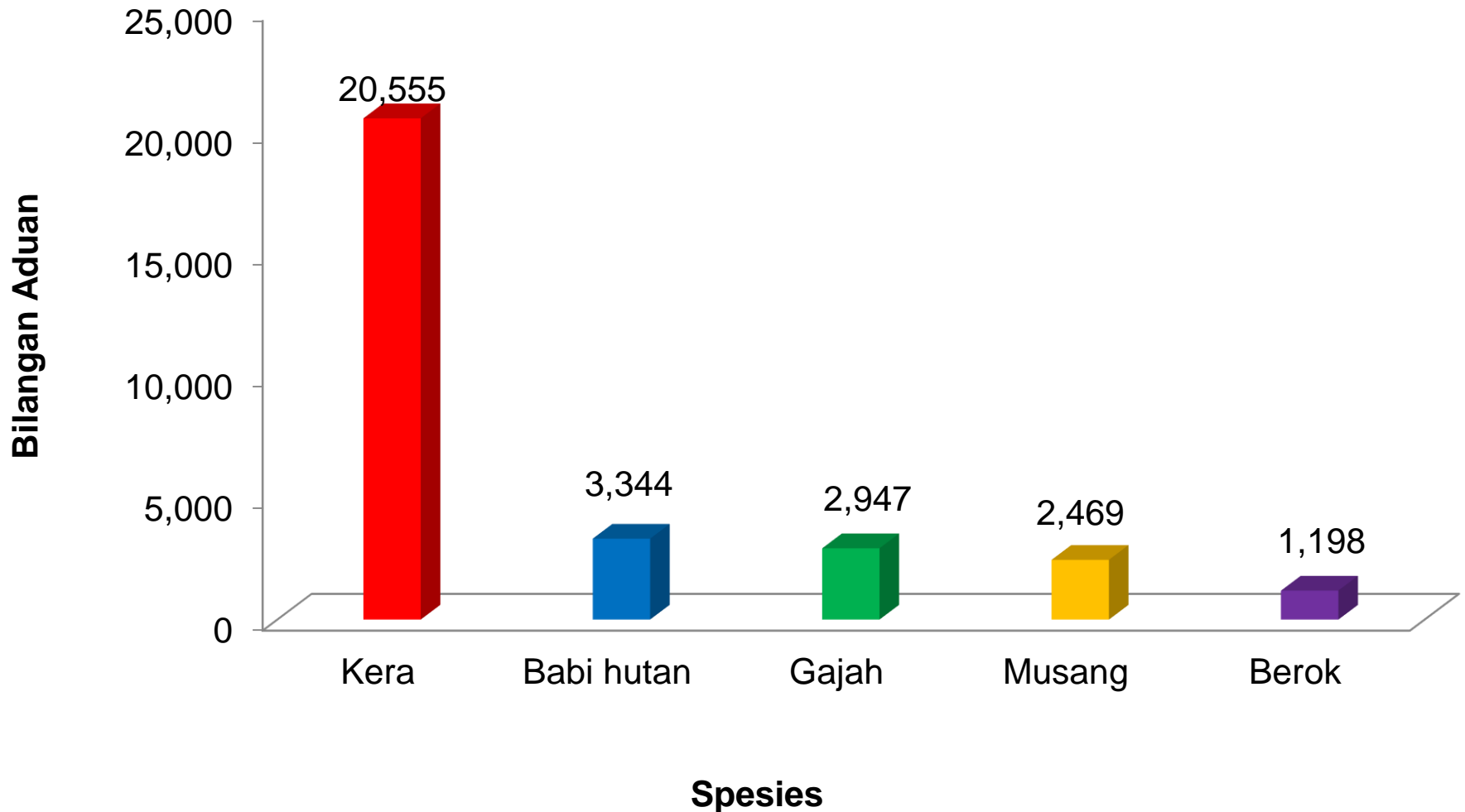
***National Tiger
Conservation Action Plan
(NTCAP)
2008***



***National Elephant
Conservation Action Plan
(NECAP)
2013***

HUMAN – WILDLIFE CONFLICT MANAGEMENT

WILDLIFE DISTURBANCE COMPLAINTS IN PENINSULAR MALAYSIA (2010 – 2014)



HUMAN – ELEPHANT CONFLICT MANAGEMENT

- 1974 – 2014:

466 elephants were translocated to major elephant habitats (Taman Negara, Royal Belum State Park & Endau-Rompin National Park)



HUMAN – ELEPHANT CONFLICT MANAGEMENT

2008 – 2014 :

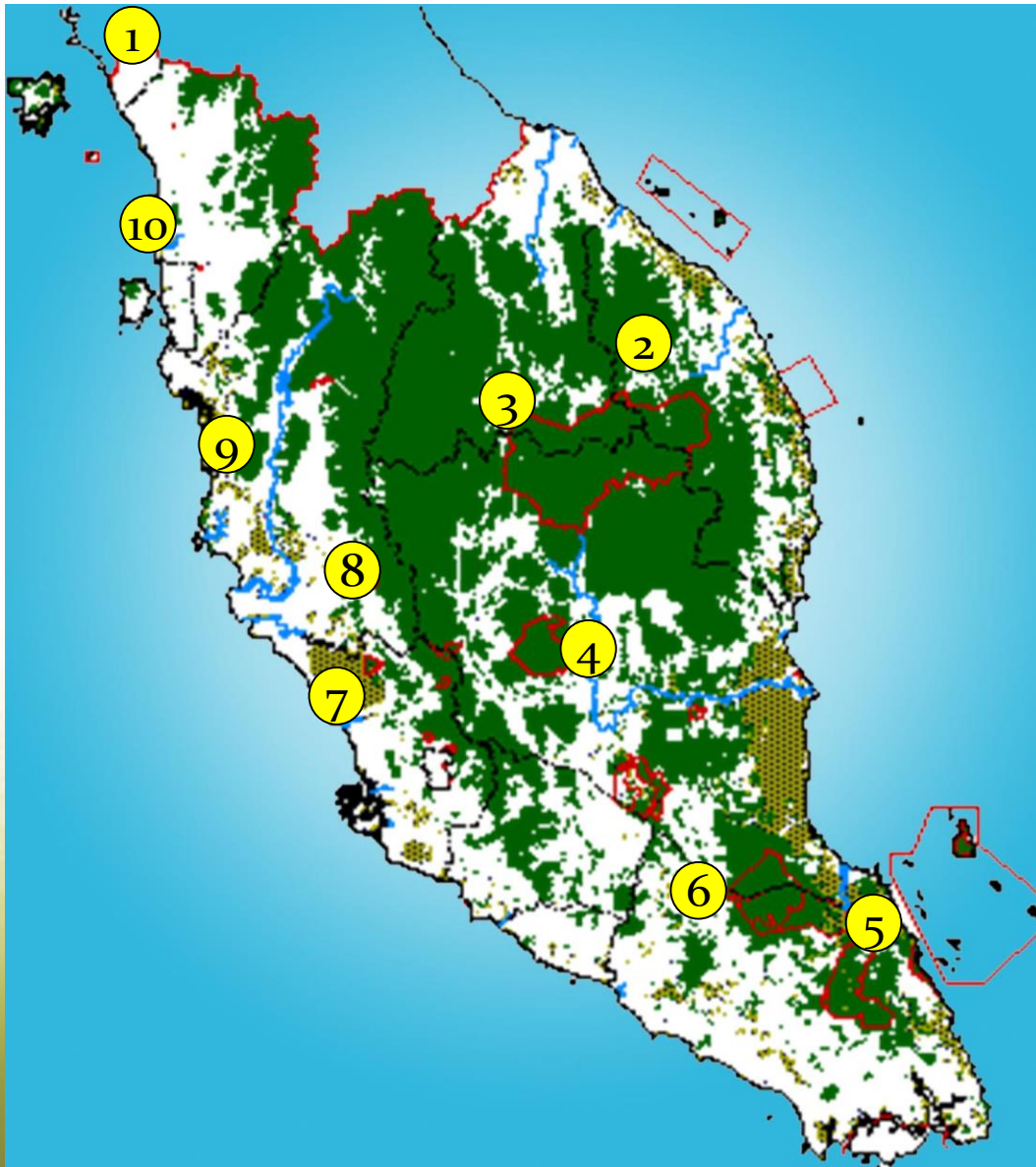
- 18 Electric Fencing System projects known as *Sistem Pagar Elektrik Gajah (SPEG)*
- 284 Km
- Cost RM 12.9 million
- Perak, Kelantan, Terengganu, Pahang & Johor



9.0 EX-SITU CONSERVATION



WILDLIFE CONSERVATION CENTRES (WCC)



1. WCC Sg Batu Pahat, Perlis
2. WCC Bukit Paloh, Terengganu
3. WCC Gua Musang, Kelantan
4. WCC Jenderak Selatan, Pahang
5. WCC Jemaluang, Johor
6. WCC Segamat, Johor
7. WCC Sungai Dusun, Selangor
8. WCC Sungkai / NWRC, Perak
9. WCC Bota Kanan, Perak
10. WCC Bukit Pinang, Kedah

WILDLIFE BREEDING & REINTRODUCTION



Malayan Gaur



Malayan Peacock-Pheasant



Banteng



Milky Stork



Sambar Deer



Tapir



WILDLIFE BREEDING & REINTRODUCTION



River Terrapin



Mousedeer



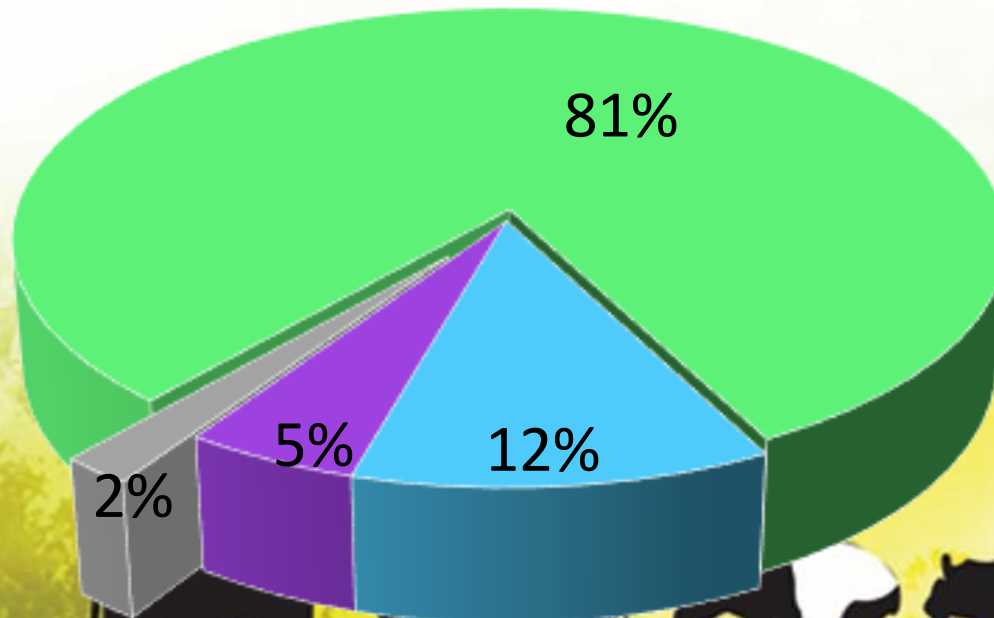
Barking Deer



WILDLIFE GENETIC RESOURCE BANK

15,167 specimens (297 species & 96 families)

- Mammals
- Reptiles
- Amphibians
- Others



ZOONOTIC DISEASES MONITORING PROGRAM



Wildlife sampling



Field investigation



Sample analysis for pathogen
detection (virus/bacteria)



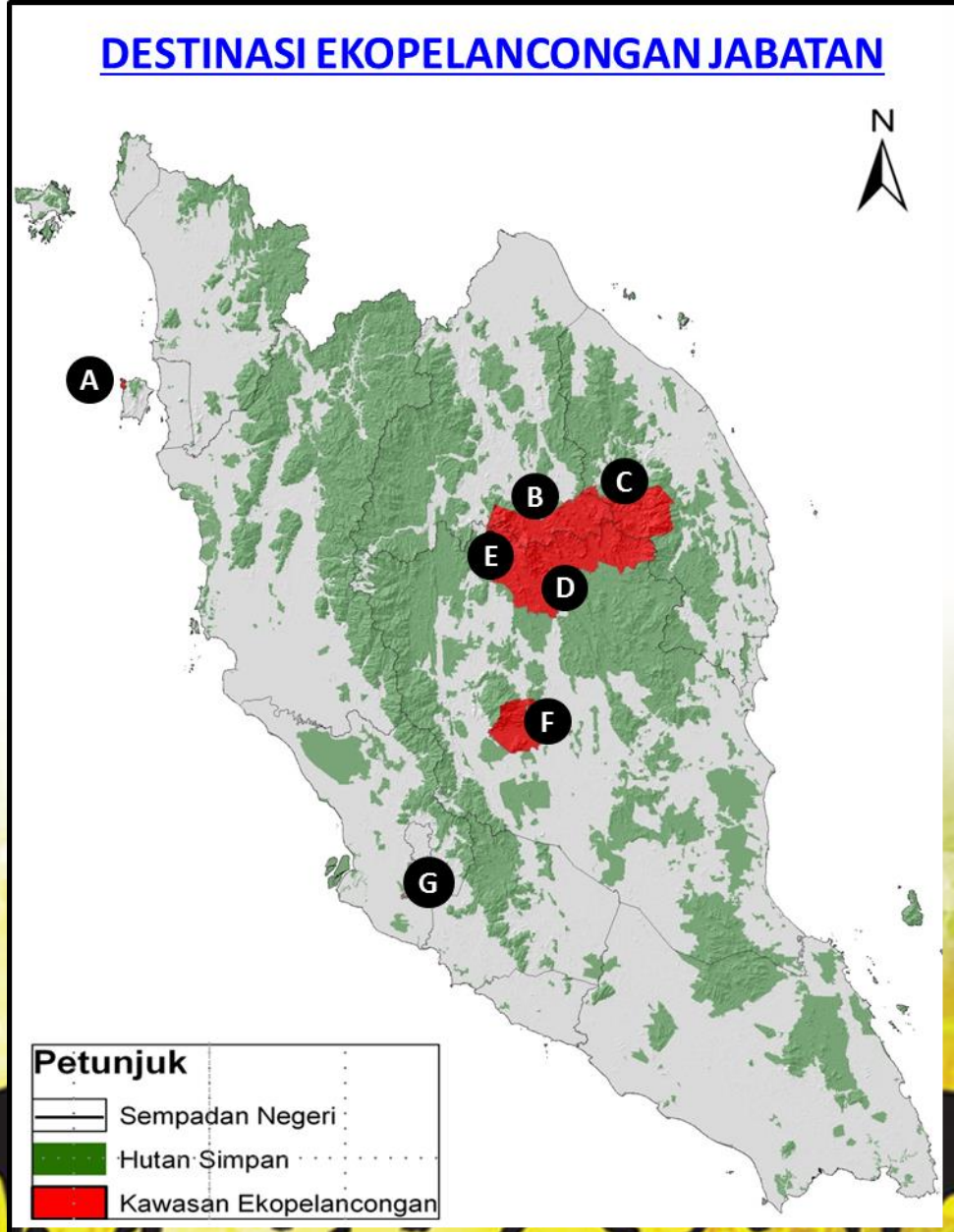
COOPERATION WITH UNIVERSITIES



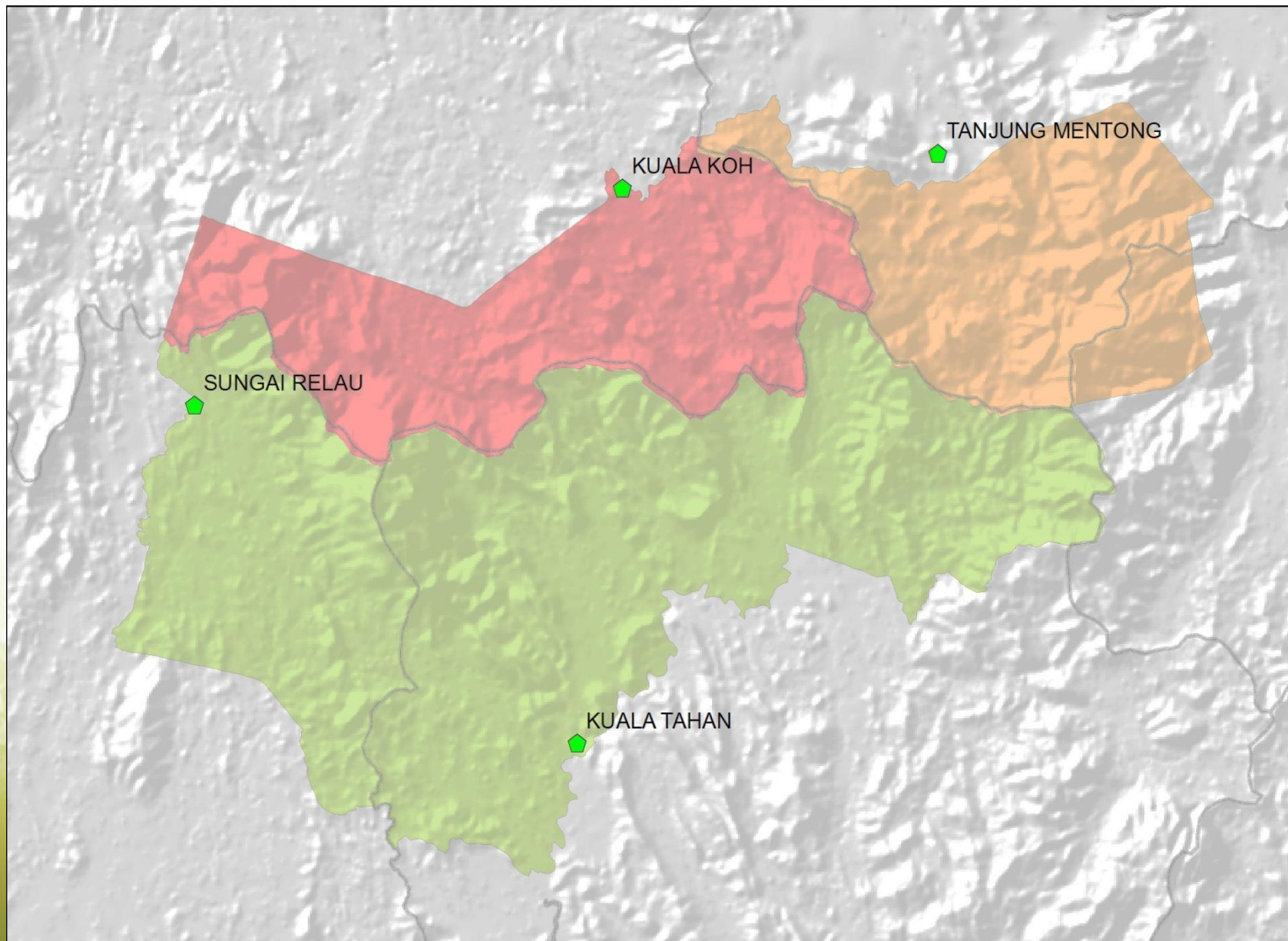
10.0 ECOTOURISM



- A** Taman Negara Pulau Pinang
- B** Taman Negara Kelantan, Kuala Koh
- C** Taman Negara Terengganu, Tanjung Mentong
- D** Taman Negara Pahang, Kuala Tahan
- E** Taman Negara Pahang, Sungai Relau
- F** Pusat Konservasi Gajah Kebangsaan
- G** Paya Indah Wetlands



ENTRY POINTS TO TAMAN NEGARA



PENANG NATIONAL PARK



Meromictic Lake



Muka Head Lighthouse



Campgrounds

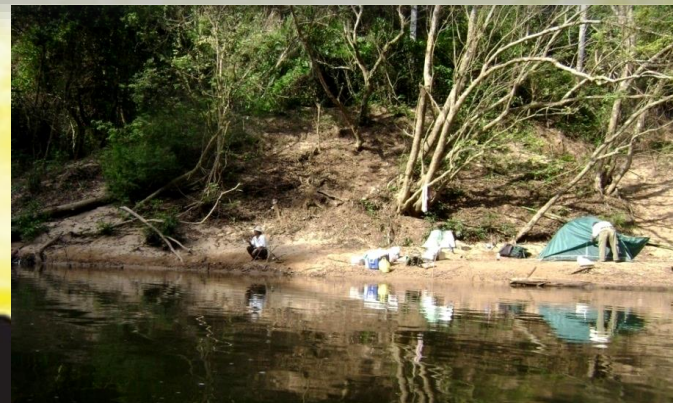
TAMAN NEGARA KELANTAN, KUALA KOH



Taman Negara Kelantan, Kuala Koh office complex



Birdwatching



Fishing

TAMAN NEGARA TERENGGANU, TANJUNG MENTONG



Bewah Caves



Taat Caves



Fishing

TAMAN NEGARA PAHANG, KUALA TAHAN



Botak Campsite (Gunung Tahan Trail)



Canopy Walkway



River crossing



Lubuk Tenor Kelah Sanctuary

TAMAN NEGARA PAHANG, SUNGAI RELAU



Kuala Juram Kelah Sanctuary



NATIONAL ELEPHANT CONSERVATION CENTRE (NECC)



Elephant observation



Interpretation



Shower with baby elephant

PAYA INDAH WETLANDS



Chalets

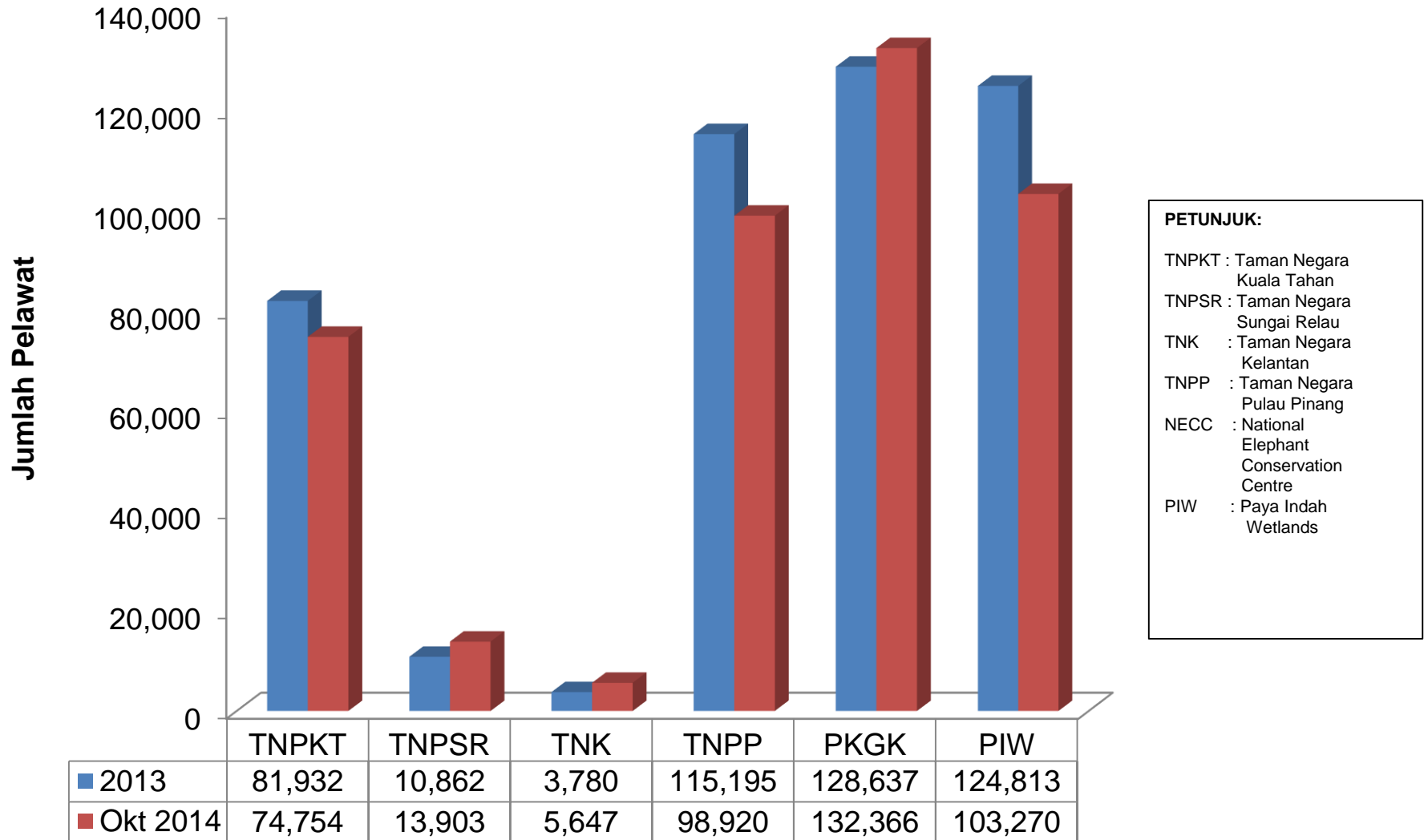


Wildlife observation



Birdwatching

VISITOR ARRIVALS TO DWNP ECOTOURISM SITES 2013 AND 2014



11.0 HUMAN RESOURCE DEVELOPMENT



TRAINING



Wildlife handling



Protected areas boundary management



Localised Nature Guide Course



Firearms training



PUBLIC AWARENESS



Exhibition



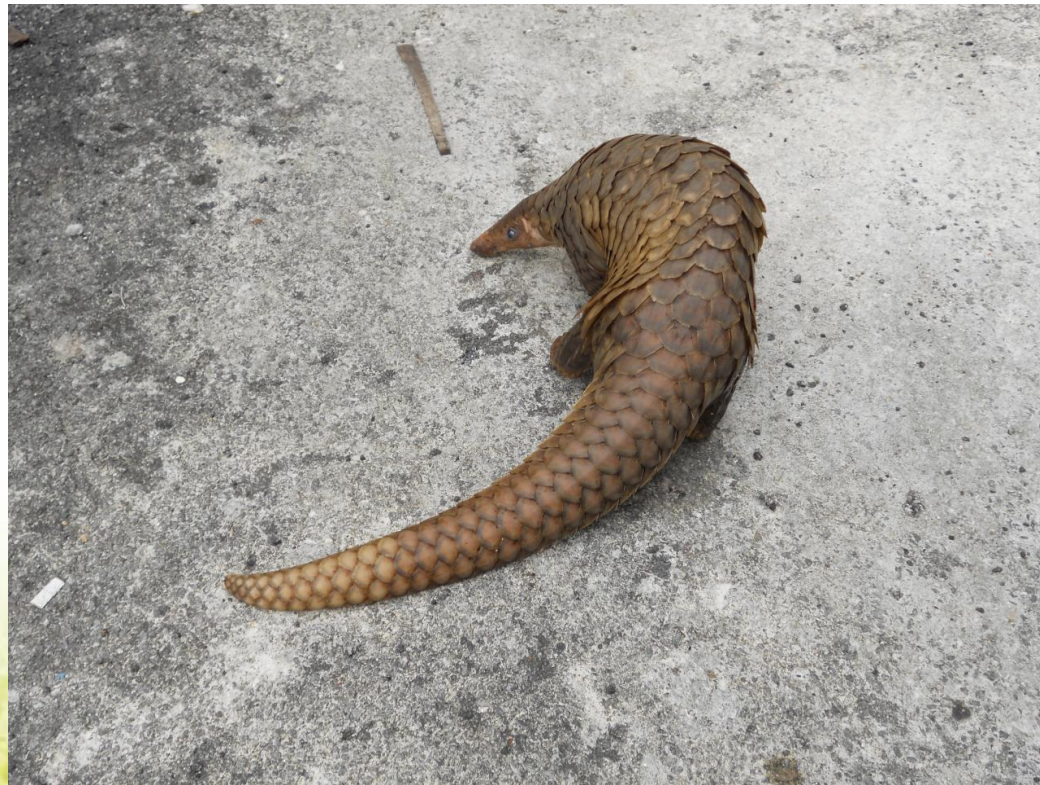
Biodiversity Education Program



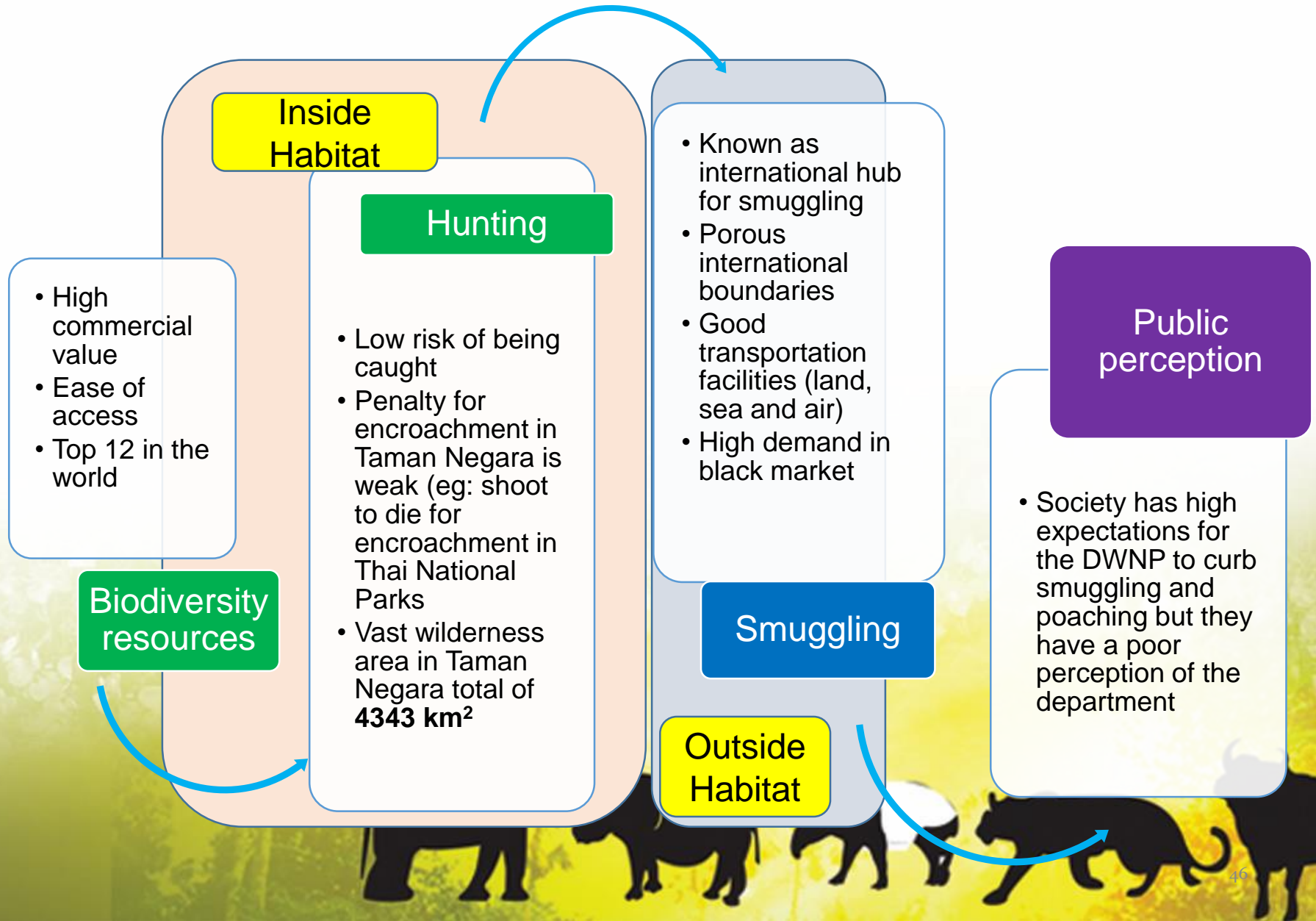
School trips and visits



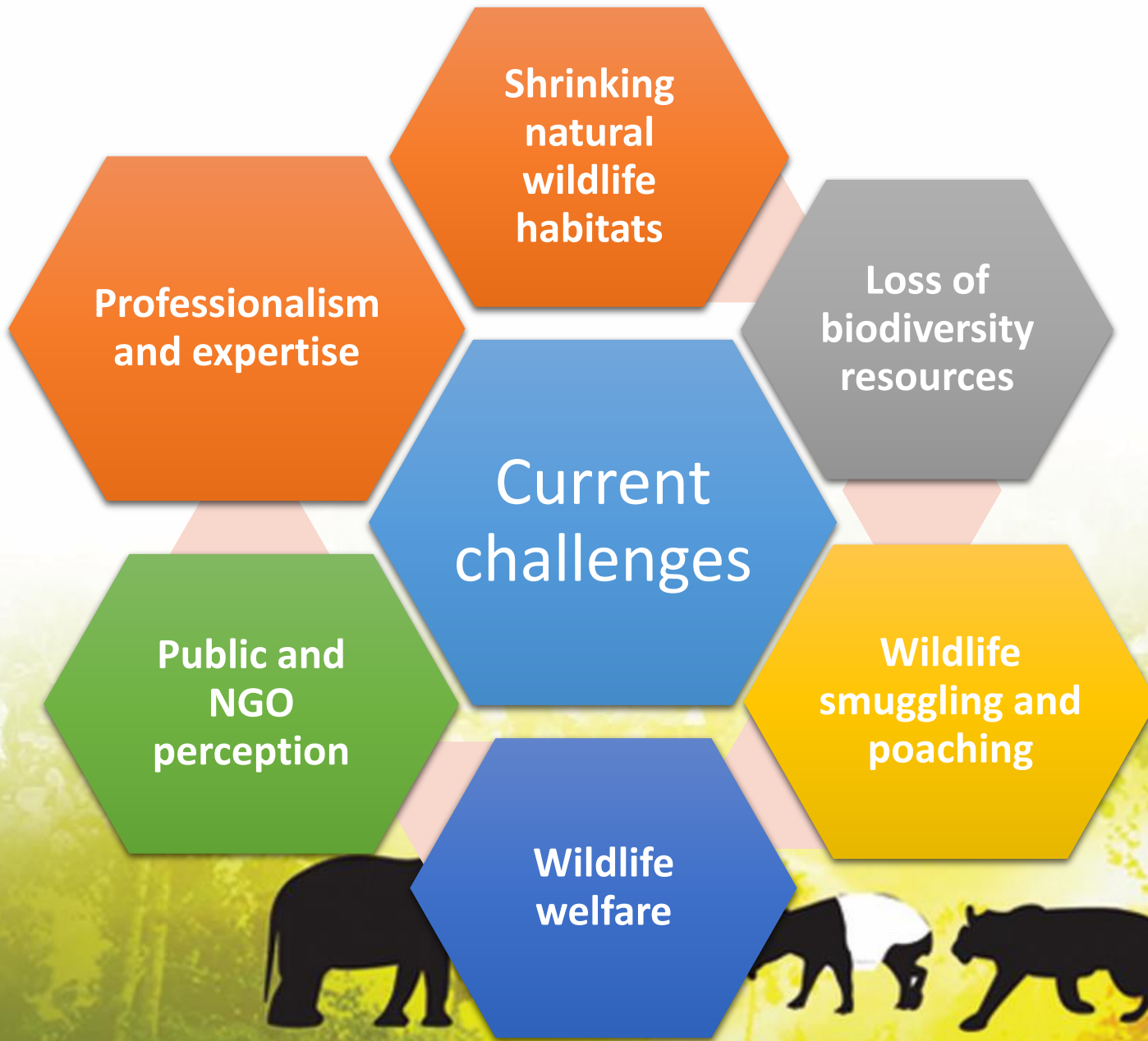
12.0 CHALLENGES



CHALLENGES IN WILDLIFE MANAGEMENT



CURRENT CHALLENGES



FUTURE CHALLENGES



Enforcing new laws (Act 716 & 686)

- Wildlife welfare in zoos
- Gazettement and enforcement of regulations
- Illegal online wildlife trading

Local community / NGO

- Spread through social media
- Local mass media
- Stakeholders
- Public complaints

International Obligations

- CITES
- IUCN
- CBD
- GTI/ GTF
- St. Petersburg Declaration
- RAMSAR
- Panda
- Australasian flyways
- Projek UNDP/GEF
- TPPA

Implementing species management plans

- Threat of extinction of critically endangered species

Zoonotic diseases

Emerging Zoonotic Disease such as malaria, leptospirosis, sarcosystis, JE, H1N1, HIV, TB

Wildlife forensics

- Need for forensic information on wildlife species
- DNA research and reference bank

Biodiversity research

- Lack of scientific data to support policies and decisions
- Database

THANK YOU

CONSERVE AND CARE FOR OUR WILDLIFE

**‘LINDUNGI DAN SAYANGI
HIDUPAN LIAR KITA’**

